

# Contributors



**Kun-Mu Chen** (SM'64-F'76) was born in Taipei, Taiwan, China, on February 3, 1933. He received the B.S.E.E. degree from the National Taiwan University, Taipei, Taiwan, China, in 1955, and the M.S. and Ph.D. degrees in applied physics from Harvard University, Cambridge, MA, in 1958 and 1960, respectively.

While at Harvard University, he held C. T. Loo and the Gordon McKay Fellowships. From 1956 to 1957 he was a Teaching Assistant at the National Taiwan University, and from 1959 to 1960 he was a Research Assistant and Teaching Fellow at Harvard University. From 1960 to 1964 he was associated with the Radiation Laboratory, University of Michigan, Ann Arbor, where he was engaged in studies of electromagnetic theory and plasma. In 1962, while on leave from the University of Michigan, he was a Visiting Professor of Electronics at Chao-Tung University, Taiwan. Since 1964 he has been with Michigan State University, East Lansing, first as Associate Professor of Electrical Engineering, and since 1967 as Professor of Electrical Engineering and Engineering Research. From 1968 to 1973 he was the Director of the Electrical Engineering program of the Department of Electrical Engineering and Systems Science. He has published numerous papers on electromagnetic radiation and scattering, and plasmas. His current research interests include the interaction of electromagnetic radiation with biological systems.

Dr. Chen is a member of U.S. Commission VI of the International Scientific Radio Union, Sigma Xi, the American Association for the Advancement of Science, and the American Association of University Professors. He is the recipient of the Distinguished Faculty Award from Michigan State University in 1976.

+

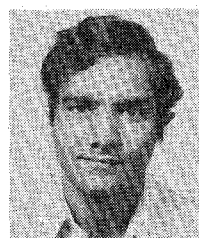


**Pietro de Santis** (M'65) was born in Rome, Italy, on November 24, 1937. He received the "Dottore in Ingegneria Elettronica" degree with highest honors from the University of Rome, in 1962 and the M.S. degree in electrophysics from the Polytechnic Institute in Brooklyn, Brooklyn, NY, in 1965.

In 1962 he joined the Research Department of Selenia S.p.A., Rome, where he was engaged in research work on microwave plasmas and ferrites. In 1971 he received the Libera Docenza in electromagnetic fields and circuits. Since 1969 he has been Professore Incaricato di Microwaves at the University of Naples, Naples, Italy. He was the Italian representative in the Management Committee of the European Microwave Conference in 1973-1975. He is Chairman of the European Microwave Conference 1976.

Dr. de Santis is a member of the American Physical Society, the Associazione Elettrotecnica Italiana, and a corresponding member of the SMAG/TC HFM.

+



**Bhag Singh Guru** (S'74) was born in Shakrulpur, India, on January 15, 1945. He received the B.S. degree in electronics and electrical communications from Panjab University, Chandigarh, India, in 1968 and the M.S. degree in electrical engineering from Michigan State University, East Lansing, in 1972. He is currently completing the Ph.D. degree requirements in electrical engineering at Michigan State University.

From 1968 to 1971 he was Senior Scientific

Assistant in the R&D Division of the Ministry of Defense, India. From 1971 to 1974 he held a Government of India Overseas Scholarship for higher education. In addition to biological effects of microwaves, his interests include antennas, scattering, and propagation.

Mr. Guru is a member of Eta Kappa Nu.

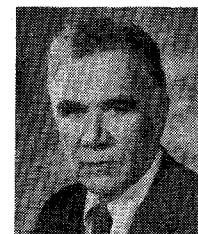
+



**Masahiro Hashimoto** (S'70-M'73) was born in Osaka, Japan, on February 26, 1943. He received the B.S., M.S., and Ph.D. degrees in electrical engineering, from Osaka University, in 1966, 1968, and 1971, respectively.

From 1971 to 1973 he was a Research Assistant on the Faculty of Engineering Science, Osaka University. His research interests were in the field of analytical and numerical analyses on antennas and waveguide-scattering problems, and the analysis of electron-beam trajectories. From 1973 to 1974 he worked at Communication Equipment Works, Mitsubishi Electric Corporation, Amagasaki, Japan, where he joined a development group designing microwave linear phase filters. From 1974 to 1976, he was engaged in research on fiber optics at the Communication Research and Development Department, Mitsubishi Electric Corporation. He recently joined Osaka Electro-Communication University, Neyagawa, Japan, where he is an Associate Professor in the Department of Applied Electronic Engineering.

+



**Marion E. Hines** (S'46-A'47-M'50-SM'60-F'68) was born in Bellingham, WA, on November 30, 1918. He received the B.S. degree in applied physics and the M.S. degree in electrical engineering from the California Institute of Technology, Pasadena, in 1940 and 1946, respectively.

From 1940 to 1945 he served as a Weather Officer with the U.S. Air Force. From 1946 to 1960 he was with the Bell Telephone Laboratories, where he worked in research and development of microwave and storage tubes, parametric amplifiers, pulse transmission systems, and tunnel diode amplifiers and oscillators. Currently, he is Vice-President and Technical Director at Microwave Associates, Inc., Burlington, MA, where he has been active in the development of harmonic-generator-type microwave sources, higher power microwave signal-control devices using diode switch elements, and solid-state microwave oscillators and amplifiers.

+



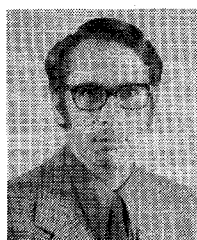
**Nobuaki Kumagai** (M'59-SM'72) was born in Ryojun, Japan, on May 19, 1929. He received the B.Eng. and D.Eng. degrees, both from Osaka University, Osaka, Japan, in 1953 and 1959, respectively.

From 1958 to 1960 he was a Visiting Senior Research Fellow at the Electronics Research Laboratory of the University of California, Berkeley, where he was engaged in research on electromagnetic-wave scattering and parametric amplifiers. From 1960 to 1970, he was

an Associate Professor of Communication Engineering at Osaka University. In 1966, he was invited to the 11th G-MTT International Symposium as an invited speaker. Since 1971 he has been a Professor of Communication Engineering at Osaka University, where he is engaged in research and education in electromagnetic theory, microwave and millimeter-wave engineering, optical waveguides and devices, and lasers and their applications. He is the coauthor of *Microwave Circuits* (Tokyo: OHM-sha, 1963) and *Introduction to Relativistic Electromagnetic Field Theory* (Tokyo: Corona Publishing Co., 1971).

Dr. Kumagai is a member of the Institute of Electronics and Communication Engineers of Japan, the Institute of Electrical Engineers of Japan, the Japan Society of Applied Physics, and the Physical Society of Japan.

\*

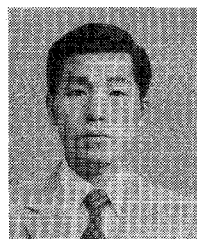


**Gerald H. Naditch** (S'63-M'70) was born in Baltimore, MD, on May 12, 1943. He received the B.S. degree in electrical engineering from the Carnegie Institute of Technology, Pittsburgh, PA, in 1965, and the M.A. degree in mathematics and Ph.D. degree in electrical engineering from Syracuse University, Syracuse, NY, in 1967 and 1973, respectively. At Syracuse University he held a National Defense Education Act Fellowship (1965-1968).

Concurrent with his graduate studies (1965-1973) he was a Research Engineer with Syracuse University Research Corporation, Syracuse, NY, where he worked on radar and digital signal processing tasks. Since 1973 he has been a Member of the Technical Staff of the MITRE Corporation, Bedford, MA, with primary areas of responsibility in communications and systems engineering.

Dr. Naditch is a member of Eta Kappa Nu, Tau Beta Pi, and Phi Kappa Phi.

\*



**Katsunari Okamoto** was born in Hiroshima City, Japan, on October 19, 1949. He received the B.S. and M.S. degrees in electrical engineering, both from the University of Tokyo, Tokyo, Japan, in 1972 and 1974, respectively. At present, he is studying toward the Ph.D. degree in the Graduate School of the University of Tokyo, specializing in light-beam transmission and integrated optical circuitry.

Mr. Okamoto is a member of the Institute of Electronics and Communication Engineers of

Japan.

\*



**Takanori Okoshi** (S'56-M'60) was born in Tokyo, Japan, on September 16, 1932. He attended the University of Tokyo, Tokyo, Japan, and received the B.S., M.S., and Ph.D. degrees, all from the University of Tokyo in 1955, 1957, and 1960, respectively, all in electrical engineering.

In 1960, he was appointed an Instructor, and in 1961, became an Associate Professor in the Department of Electronic Engineering, University of Tokyo, where he worked primarily in

the field of microwave circuits, microwave measurements, and microwave electron devices. From 1963 through 1964, on leave of absence from the University of Tokyo, he joined Bell Telephone Laboratories Inc., Murray Hill, NJ, where he was engaged in research on electron guns. He returned to the University of Tokyo in 1964, and since then he has been working again in the microwave field, specializing in microwave planar (two-dimensional) circuits and collectors for beam-type tubes. In 1972 he joined the Technical University of Munich on a temporary basis as a Guest Professor. At present, the main fields of his interest are microwave planar circuits, optical waveguides, holographic memories, and three-dimensional imaging.

Dr. Okoshi is an Associate Editor of the IEEE TRANSACTIONS ON MICROWAVE THEORY AND TECHNIQUES.

\*

**Ronald S. Posner** (M'72), photograph and biography not available at the time of publication.

\*



**Shinnosuke Sawa** (M'72) was born in Osaka, Japan, on October 23, 1938. He received the B.E. degree in electrical engineering from the University of Osaka Prefecture, in 1962, and the M.E. and Ph.D. degrees in electrical communication engineering from Osaka University, in 1967 and 1970, respectively.

From 1962 to 1964 he worked in industry for the Mitsubishi Electric Corporation, where he was engaged in ignitron manufacture and vacuum switch development at the corporation's

Kyoto plant. From 1970 to 1976 he was an Associate Professor, and since 1976 he has been a Professor of Electronics Engineering at Ehime University, Matsuyama City, Japan, where he is engaged in research and education in electromagnetic theory, electromagnetic-wave engineering, optical waveguides, and optical integrated circuits.

Dr. Sawa is a member of the Institute of Electronics and Communication Engineers of Japan and the Institute of Electrical Engineers of Japan.

\*

**Allen A. Sweet** (S'71-M'71), photograph and biography not available at the time of publication.

\*



**Donald D. Weiner** (S'54-M'60) was born in Boston, MA, on October 30, 1934. He received the S.B. and S.M. degrees from M.I.T. in 1956 and 1958, and the Ph.D. degree from Purdue University in 1964, all in electrical engineering.

He has worked for Philco Corp., General Electronic Laboratories, and the Sylvania Applied Research Laboratory, and has taught at M.I.T., the University of Miami, and Purdue University. He joined Syracuse University in 1964 as Assistant Professor in the

Department of Electrical and Computer Engineering where he became a Full Professor in 1973. His current interests are in the application of nonlinear systems analysis techniques and communication theory to electromagnetic compatibility problems.